

SCHWING
AMERICA INC.

S 58 SX
S 61 SX

**Custom Carrier Mounted Concrete Pump
with 4-section Placing Boom**



The **S 58 SX** and the **S 61 SX**



NEW HEIGHTS...

Identify your company as the market leader by owning the longest boom in the business. The S 58 SX and S 61 SX generate higher revenues than any other boom pumps by reaching up to 197 feet to handle jobs no other boom pump ever has before. And because Schwing has designed these pumps with maneuverability, reliability and operator convenience, they can be dispatched with the ease of smaller pumps.

NEW POSSIBILITIES...

These pumps are not an enlarged version of an existing model but a brand new design. From subframe to Super X outriggers the S 58 SX and S 61 SX are engineered to set up quickly, operate smoothly and travel without difficulty. Integrated into this new design are proven Schwing only features that result in long-term profitable performance.



The **BIG** picture **PUMPS**



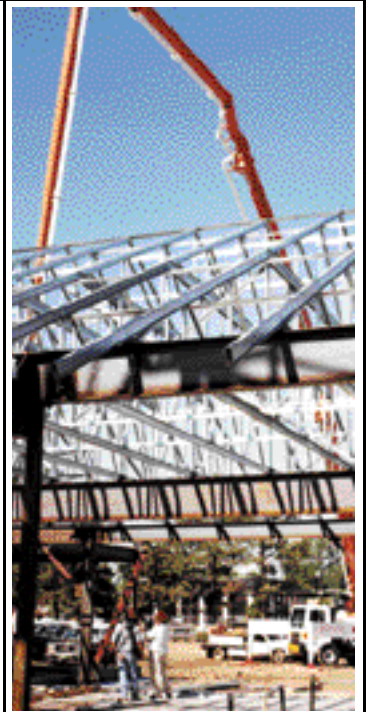
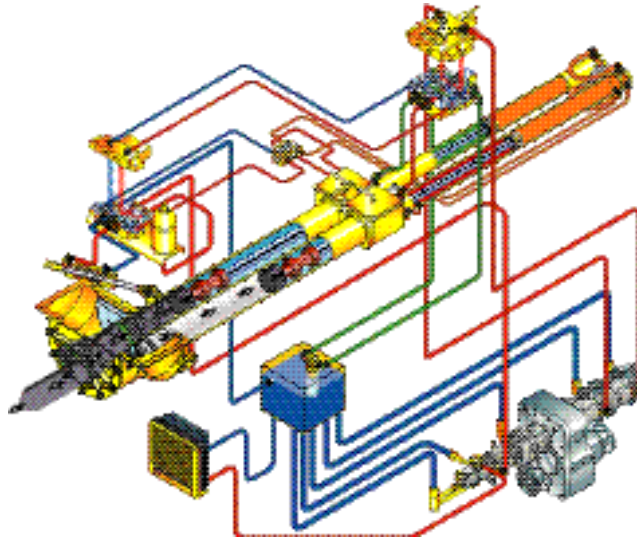
S 61 SX



Be a leader with Generation III Technology

Generation III technology combines with our longest stroke pumping cylinders for a smooth, steady flow of concrete. Forget about other manufacturer's output claims, these machines will pump as fast as you can feed it. The large 10" diameter material cylinders stroke slowly for reduced wear and a smooth boom even at maximum output.

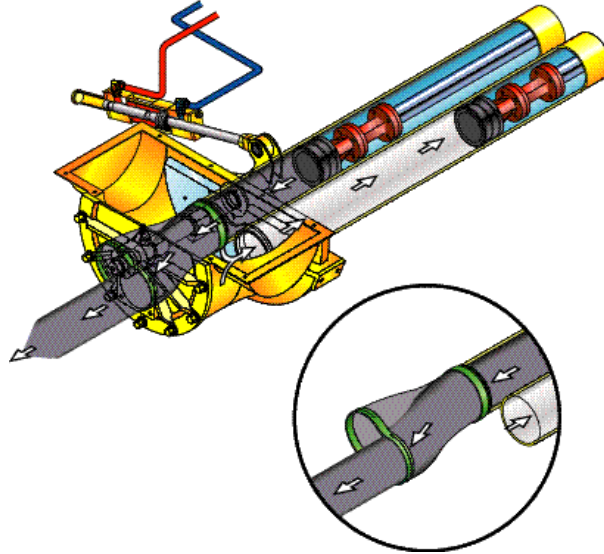
Our exclusive all-hydraulic design is the choice for contractors who value reliability over troublesome electronic gimmicks. We've anticipated all possible situations and this comprehensive design continuously pumps regardless of temperature, demand or mix design.



Experience the superior performance of the new Big Rock™

Schwing capitalizes on the benefits of the legendary Rock Valve™ with a new model ideally suited to high performance pumps. The Big Rock™ sets even higher standards for smooth sequencing of the concrete from material cylinders to pipeline. The Big Rock's™ computer aided design optimizes concrete flow through the valve for smooth pumping. This results in less wear and greater efficiency when pumping harsh mixes. All of the legendary reliability has been retained along with the lowest maintenance cost per yard. Standard auto greasing keeps maintenance to a minimum while protecting your investment. The Big Rock's™ unique design also provides extraordinary sealing

The Big Rock™



efficiency to prevent bleeding of fines. These engineering advantages make the Big Rock™ the most reliable valve in the industry and the most affordable. Combined with the Generation III pumping system, the Big Rock™ equipped S 58 SX or S 61 SX is the ultimate concrete pump for all applications.



Featuring the innovation and performance expected from **SCHWING**

Comfort Control

This is the management tool that allows you to access valuable data instantaneously while your pump is running or review the pump's entire operational history at a glance. Programmed lock-outs prevent machine damage by operator error or system deviations. Multiple sensors monitor pump functions and ensure proper operation by making certain functions dependent on others.

No more guesswork when system deviations are stored for diagnosis between pours. A complete history including total yards pumped, boom hours, PTO hours, and much more allows for management of the equipment for maximum efficiencies.

Schedule regular maintenance based on actual hours of operation. Password lock-outs prevent unauthorized access for further peace of mind.



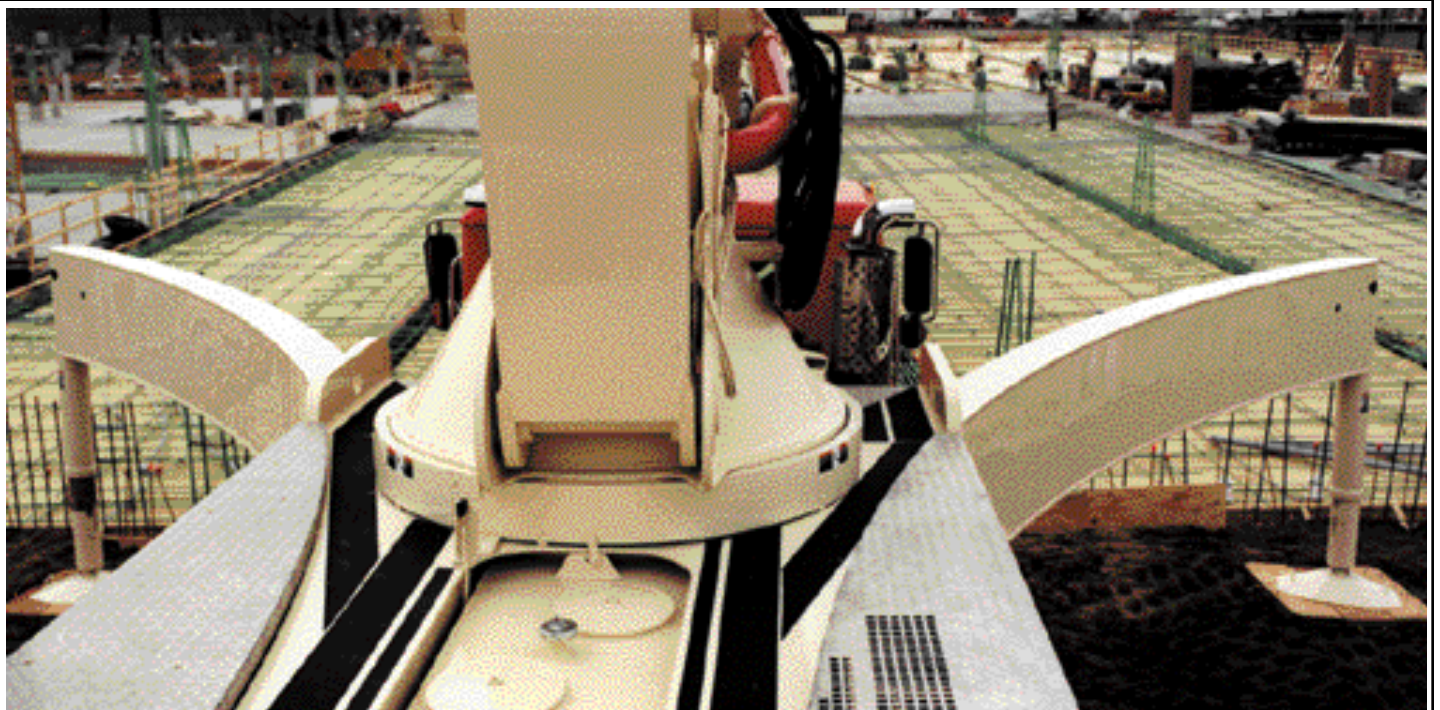
Spread Spectrum Radio Remote

Interference-free radio remote is a must when precision placement is required. The exclusive Schwing Spread Spectrum system hops 50 frequencies every second for a strong, safe signal. Operate around airports, other remote controlled booms, cell-signals and two-way radios with complete confidence. The easy-to-use digital proportional wireless remote box gives fingertip control for smooth boom movements. Wireless remote allows the operator to be in the most advantageous position to view the end hose.



Super X Outriggers

First introduced by Schwing with the popular 45-meter model, these outriggers allow long booms to have a compact footprint and set-up quickly. The curved front outriggers extend hydraulically rather than swing-out, so job site obstructions can be easily avoided, allowing you to operate where other long booms cannot. Plus the S 58 SX and S 61 SX require 25% less area for set-up than shorter booms.



Be a leader.

Overhead Roll and Fold® Boom

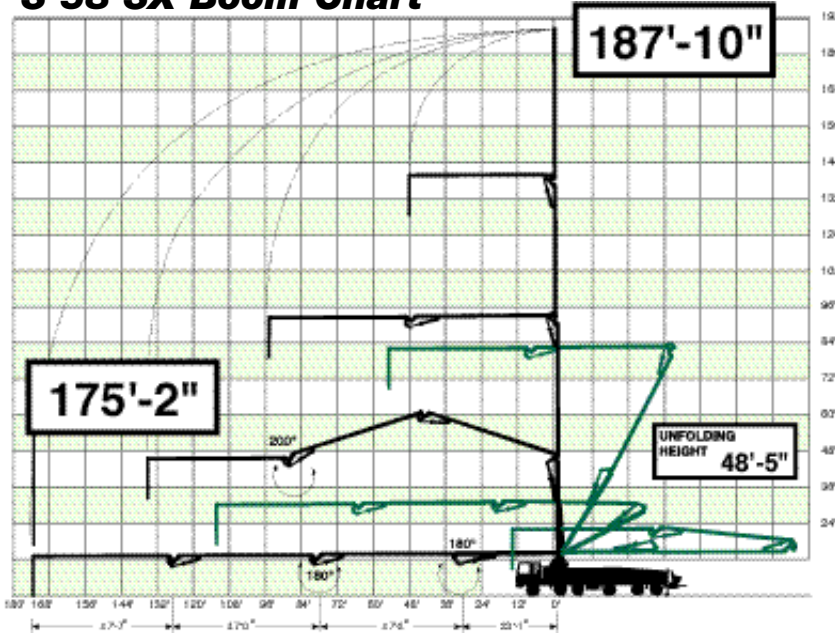
Reach out, up and below grade with no dead spots. Angle the main section back at any angle and feed the boom into elevated decks even when overhead clearance is limited. This reduces extra system in many cases for faster set-up and less

labor on the job. Other boom types don't have this flexibility and limit where the first section can be positioned. We've designed this four-section boom with the shortest tip section of any long boom so maneuverability is enhanced. This means an unlimited variety of boom positions from straight out, straight up or right back to

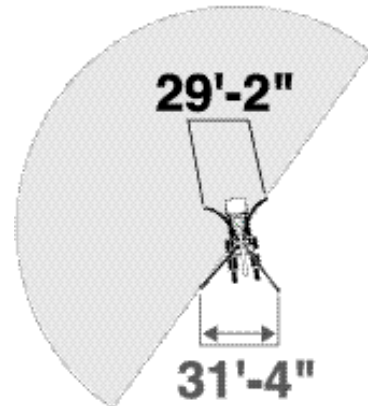
the truck bumper. Coupled with the smallest footprint in the industry, this long boom sets up surprisingly easy. With smooth, proportional boom controls, standard auto greasing and the most refined concrete pump in the world - the result is **solutions, value** and **success** for owners.



S 58 SX Boom Chart

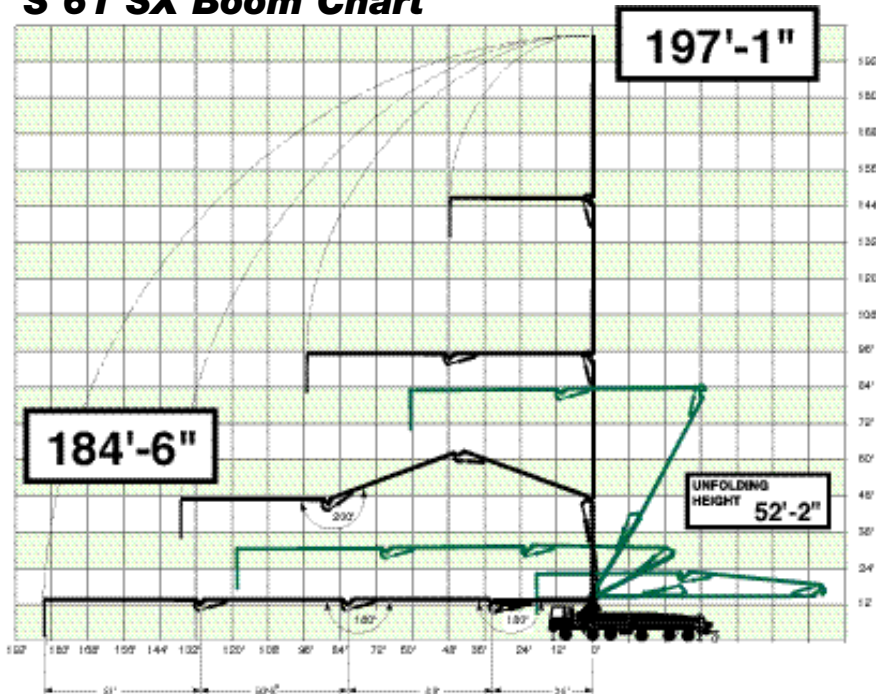


Modified Outrigger Operating Zone

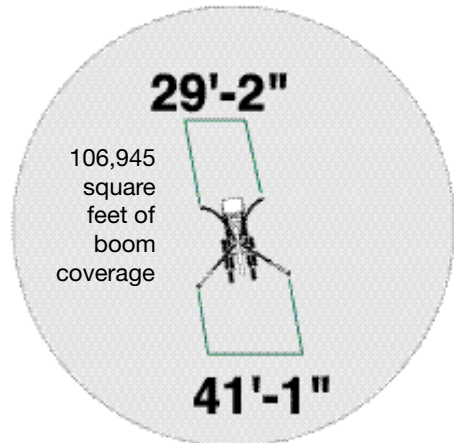


Both front outriggers and pour side rear outrigger fully deployed.

S 61 SX Boom Chart



Standard Outrigger Operating Zone



All outriggers full deployed.

Outrigger soil pressure
Front: 157 psi • Rear: 166 psi

Consult operators manual for details on outrigger set-up.



Available Pump Kits	2525H-6	
	U.S.	Metric
Theor. Concrete Output	213 cu/yd/hr	163 cu/m/hr
Max. Pressure on Concrete	1169 psi	81 bar
Max. Strokes/Min.	22	22
Pump Cylinder Diameter	10 in.	25 cm
Pump Cylinder Stroke Length	98 in.	250 cm
Differential Cylinder Size	4.7	120 mm
Max. Aggregate Size	2.5	62.5 mm
Hydraulic System Pressure	5075 psi	350 bar

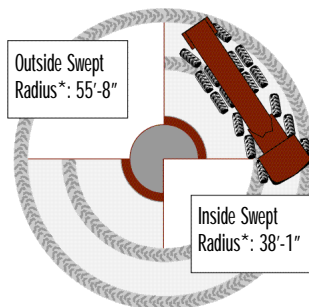
Specifications are subject to change without prior notice.

Boom Specifications	58 US	61 US	58 metric	61 Metric	
Pipeline Diameter	5"	4.5"	125 mm	112 mm	
Vertical Reach	187'-10"	197'-2"	57.24 m	61 m	
Net Horizontal Reach	162'-9"	172'-9"	49.6 m	52.7 m	
Horizontal Reach	175'-2"	184'-6"	53.4 m	56.4 m	
Unfolding Height	48'-6"	52'-3"	14.8 m	15.9 m	
Section Length	1st Section	33'-1"	34'	10 m	10.4 m
	2nd Section	47'-3"	49'	14.4 m	14.9 m
	3rd Section	47'-3"	50'-8"	14.4 m	15.4 m
	4th Section	47'-7"	51'	14.5 m	15.5 m
Slewing Range	370°	370°	370°	370°	
End hose length	10'	10'	3 m	3 m	

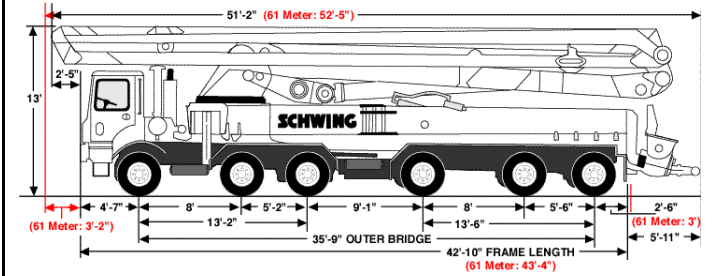
Specifications are subject to change without prior notice.

The tightest TURNING RADIUS in its class...

With three front steering axles and a rear steer system, the S 58 SX and S 61 SX outmaneuver all other competitive models.



*Turning radius specifications for pump mounted on Tor chassis.



SCHWING

AMERICA INC.

5900 Centerville Road
 St. Paul, MN 55127
 Tel 651-429-0999
 Fax 651-429-3464
 www.schwing.com
 1-888-SCHWING

Represented by