

Versatile concrete pump; 5 section, multi-Z-boom that can unfold at 19 feet, 5 inch line, 170 cubic metres per hour.



PUMP SPECIFICATIONS

Maximum output {fully variable}	224 cu yds/hr {171m3/hr.}
Concrete cylinder {hard chromed}	9" x 83" {230 mm x 2100 mm}
Strokes per minute	31
Concrete pressure {rod side}	1043 PSI {72 Bar}
Concrete pressure {head side}	1600 PSI {114 Bar}
Hopper capacity	21 cu/ft {600 liters}
S-Tube	9" x 7" {220 mm x 180 mm}
Hydraulic pump	Rexroth A11LO260
Cycling system	All hydraulic sensing w/ manual overrides
Max. aggregate size	2 1/2" {65 mm}

BOOM SPECIFICATIONS

5 section Z fold boom {vert. reach}	105' {32 M}
Maximum horizontal reach	92' 10" {28.3 M}
Reach from front of truck	85' {25.9 M}
Unfolding height	19' {5.8 M}
Rotation	370 degree
Section articulation	94 / 180 / 240 / 240 / 240
Proportional Boom	Yes
Delivery line	5" {125 mm}
1st Section	25'3" {7.7 M}
2nd Section	16'9" {5.1 M}
3rd Section	16'5" {5.0 M}
4th Section	16'5" {5.0 M}
5th Section	16'1" {4.9 M}

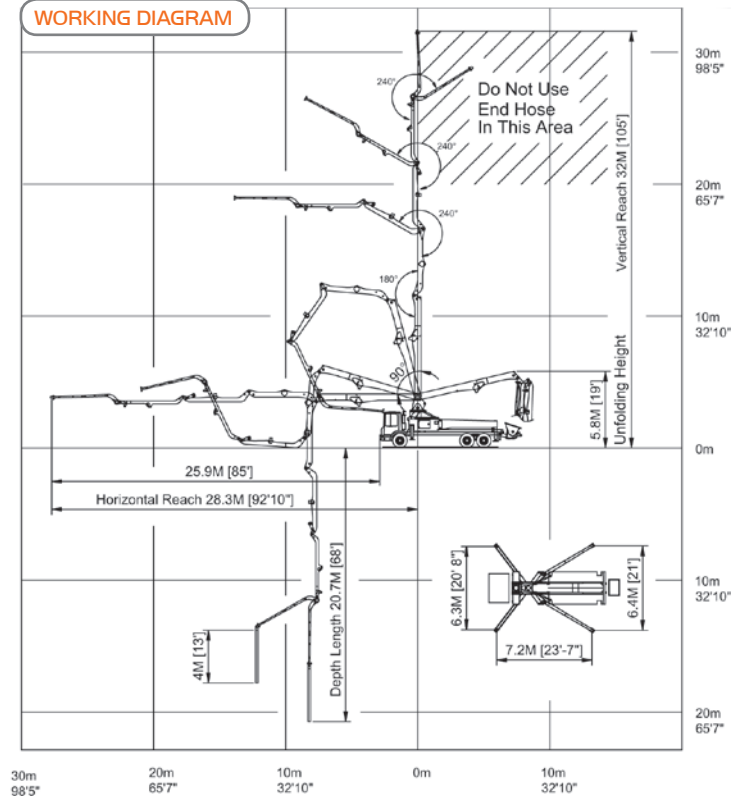
OUTRIGGER SPECIFICATIONS

All hydraulic	Yes
Front spread	20' 8" {6.3 M} L to R
Rear spread	21' {6.4 M} L to R
Max Outrigger weight	20,500 Kg {45,195 Lbs}

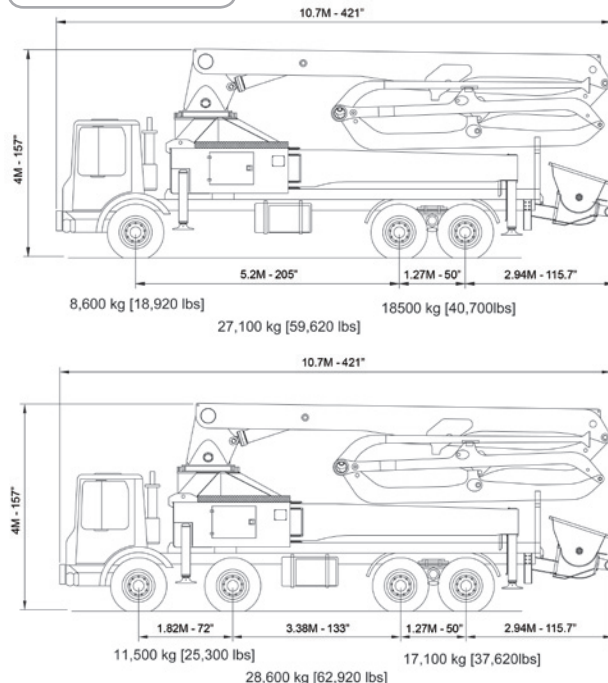
STANDARD FEATURES

- One cable remote control and one radio remote control
- Flushing water system with 132 gallon {500 L} tank
- Hopper vibrator
- Automatic lubrication system {hopper only}
- Tool Box includes basic repair items
- Whip hose of your choice

WORKING DIAGRAM



WEIGHT DIAGRAMS



Concord reserves the right to make changes to these specifications